

# CASE STUDY



**McBreen  
Enviro UK**



## Project Scope:

- The project aimed to eliminate groundwater infiltration in a 900mm diameter concrete pipe under the A30 roadway, an essential mammal crossing allowing wildlife to safely cross this busy section of the Chiverton to Carland Cross route in Cornwall.

## Challenges:

- Severe Groundwater Infiltration: Affected 40 segments of the pipe (18 in one section and 22 in another).
- Wildlife Protection: Required minimal disruption to preserve safe animal passage.
- Safety Requirements: Demanded a skilled team trained in confined space operations and rescue and recovery.

## S1E AND MCBREEN ENVIRO UK COLLABORATE TO RESOLVE PIPE INFILTRATION AT THE A30 MAMMAL CROSSING

 **CORNWALL**

The A30 Chiverton to Carland Cross upgrade is part of the Government's Road Investment Strategy, aimed at improving the route to a dual carriageway standard.

During construction, significant groundwater infiltration was detected in a 900mm diameter concrete pipe serving as one of the mammal crossings. This pipe, surrounded by wildlife-proof fencing to guide animals safely under the busy road, required urgent attention to prevent structural damage and maintain its critical function.

# CASE STUDY



**McBreen  
Enviro UK**

## Effective Solutions with K-Prema Mechanical Seals

S1E was consulted for a reliable repair solution and recommended McBreen Enviro UK for their expertise. The K-Prema Mechanical Seals were chosen for their durability and effectiveness in preventing water ingress.

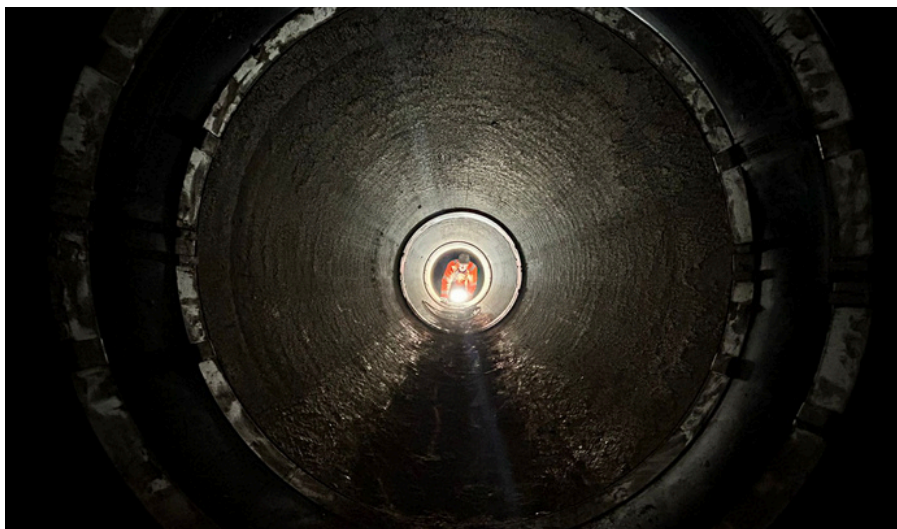
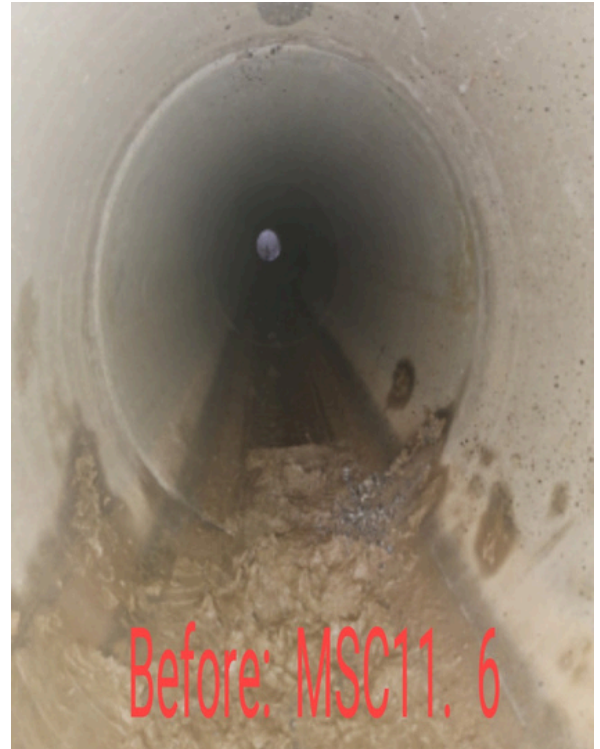
## Implementation Process

A team of McBreen Enviro UK specialists, certified in confined space work, installed the seals.

The seals were applied strategically to reinforce the 900mm pipe and halt infiltration, ensuring long-term functionality.

## Results of the Pipe Infiltration Solution

- **Successful Infiltration Mitigation:** The K-Prema Mechanical Seals fully addressed the groundwater issue, sealing the pipe and preventing further water ingress.
- **Timely Project Completion:** Achieved within the set timeframe with minimal disruption.
- **Enhanced Infrastructure and Wildlife Conservation:** The repaired crossing now supports ongoing wildlife movement and roadway stability.



**WANT TO LEARN MORE ABOUT OUR  
DRAINAGE SOLUTIONS?**

☎ 01905 959013

✉ [sales@mcbreenenviro.co.uk](mailto:sales@mcbreenenviro.co.uk)

🌐 [www.mcbreenenviro.co.uk](http://www.mcbreenenviro.co.uk)